


4400 Series

4485 Capacity and Range Chart:

OPERATING WEIGHT	LOAD RATINGS IN LBS. WITH OUTRIGGERS EXTENDED						AREA OF OPERATION			
	27 FT	42 FT	56 FT	70 FT	85 FT					
577	44000						 360° FULL CAPACITY WORK AREA			
870	31300	27000								
1065	26350	25000								
1260	22700	21425	18575							
1455	19900	18675	16100	13000						
1650	17600	16550	14175	12100						
2037	13800	13400	11375	9700	76	9550				
2510	8000	10650	9000	8750	73	7375				
30		8600	7325	657000	70	6875				
35		30	6700	6900	61	5850		66	5650	
40		8	3650	5775	56	4900		62	4700	
45				34	4550	50		4650	59	3950
50				24	3525	45		3675	55	3750
55						38		2950	51	3025
60						30		2400	46	2425
65						18		1800	41	1950
70									35	1550
75									28	1225
80									18	775
	700	500	350	300	250	STOWED #8 DEDUCTIONS				

NOTE: RATINGS ABOVE THE HEAVY LINE ARE BASED ON STRUCTURAL COMPETENCE AND NOT ON MACHINE STABILITY.

JIB CAPACITIES FOR ALL BOOM LENGTHS

CAPACITY ALERT SYSTEM, IF SO EQUIPPED, IS NOT FUNCTIONAL WHEN LIFTING WITH JIB

LOADED BOOM ANGLE	50°	55°	60°	65°	70°	75°	78°	80°
RETRACTED								
0° OFFSET	850	1025	1525	2325	3225	4325	4925	5325
15° OFFSET	600	750	925	1375	1750	2000	2000	2000
30° OFFSET	500	600	675	975	1175	1275	1275	1275
EXTENDED								
0° OFFSET	525	725	1125	1525	2025	2525	2825	3125
15° OFFSET	450	525	675	850	1025	1100	1100	1100
30° OFFSET	400	450	550	650	750	750	750	750

NOTE: Please consult the Terex Cranes full-line brochure for a complete listing of standard features and optional equipment.

STINGER 4485

4485 Optional Mounting Configurations:

Behind Cab (TC)
Rear Mount (RM)

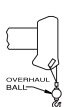
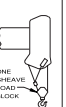

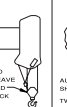

(Some standard features for the optional mounting configurations will vary. Please consult your Terex Cranes dealer or factory for chassis and mounting requirements.)

TC 4485 Minimum Chassis Requirements:

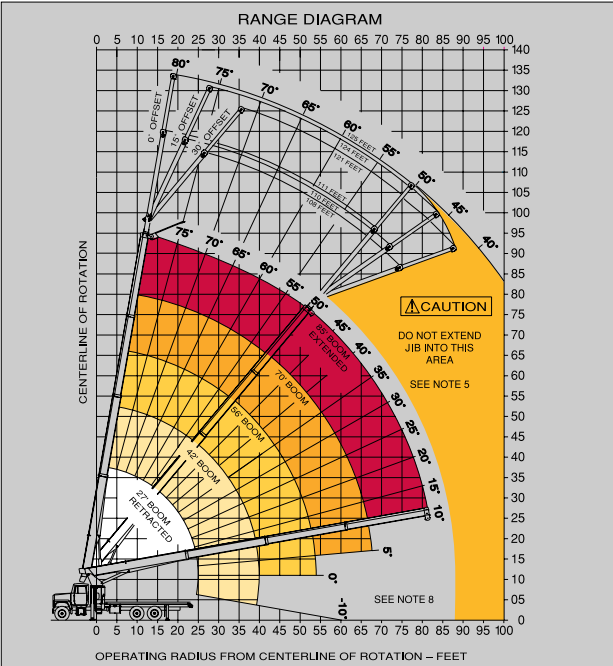
Chassis specifications are minimum for truck-crane mount. Not applicable to optional mounting configurations.

- Gross Vehicle Weight Rating52,000 lbs. (23,587 kg)
- Front Axle Weight Rating18,000 lbs. (8,165 kg)
- Rear Axle Weight Rating34,000 lbs. (15,422 kg)
- Wheelbase246 in. (6,248 mm)
- Cab To Axle168 in. (4,267 mm)
- Afterframe100 in. (254 mm)
- TransmissionHeavy-Duty 6-Bolt PTO (Neutral lock-up required for automatic transmission)
- Electrical SystemHeavy-Duty
- Cooling SystemHeavy-Duty
- Frame Section Modulus26 in.³ (426 cm³)
- RBM Per Frame Rail2,860,000 in./lbs. (32,955 kg-m)

Rope and Reeving:

1 PART LINE	2 PART LINE	3 PART LINE	4 PART LINE	5 PART LINE	CAUTION
					
LOADS UP TO 9,800 LBS. STD. CABLE	LOADS UP TO 19,200 LBS. STD. CABLE	LOADS UP TO 28,800 LBS. STD. CABLE	LOADS UP TO 38,400 LBS. STD. CABLE	LOADS UP TO 48,000 LBS. STD. CABLE	
6,700 LBS. ROT. RESIST. CABLE	13,440 LBS. ROT. RESIST. CABLE	20,160 LBS. ROT. RESIST. CABLE	26,880 LBS. ROT. RESIST. CABLE	33,600 LBS. ROT. RESIST. CABLE	

THIS MACHINE COMPLIES WITH OSHA REGULATIONS 1910.159 AND 1926.155 WHERE APPLICABLE AT DATE OF MANUFACTURE



NOTE: Diagrams depict recommended mounting dimensions. The dimensions of optional mounting configurations will vary. Please consult your dealer or Terex Cranes for specifics. Dimensions do not include load deflection.

