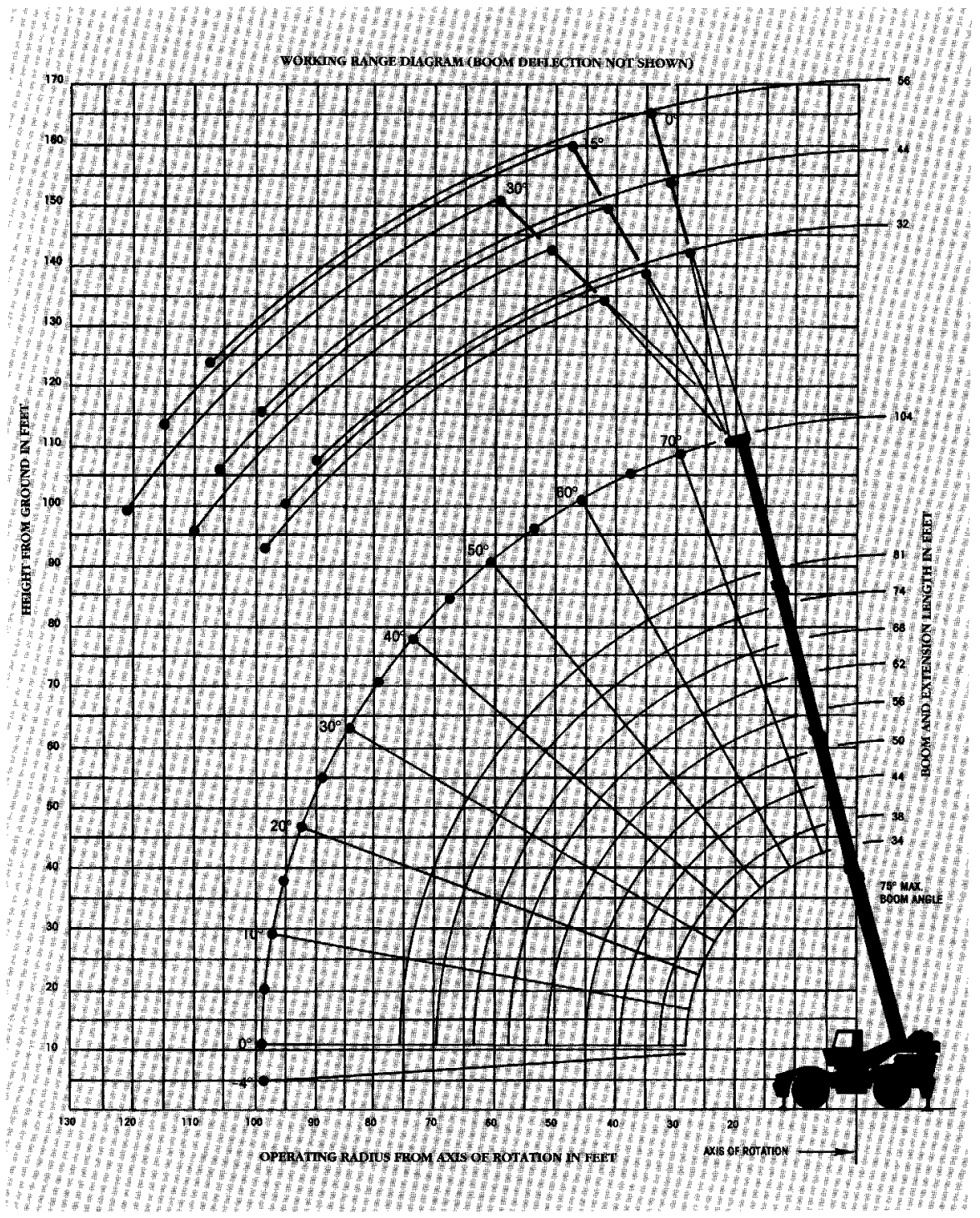




# RT745

Rough terrain hydraulic crane/85% Domestic  
 34 ft.-104 ft. powered pinned boom



## ZERO DEGREE BOOM ANGLE CHARTS

### ON OUTRIGGERS - 360°

Boom Angle	Main Boom Length in Feet									
	34	38	44	50	56	62	68	74	81	104
0°	20,250 (28)	17,050 (32.3)	13,650 (38.3)	11,000 (44.3)	9,010 (50.3)	7,370 (56.3)	6,020 (62.3)	4,900 (68.3)	3,860 (74.8)	2,670 (98.2)

### ON RUBBER 21.00 x 25 TIRES

Stationary Capacity Defined Arc (3) Over Front

Boom Angle	Main Boom Length in Feet							
	34	38	44	50	56	62	68	74
0°	17,900 (28)	13,850 (32.3)	9,960 (38.3)	7,290 (44.3)	5,350 (50.3)	3,880 (56.3)	2,730 (62.3)	1,800 (68.3)

Stationary Capacity 360° Arc

Boom Angle	Main Boom Length in Feet				
	34	38	44	50	56
0°	8,920 (28)	6,480 (32.3)	4,130 (38.3)	2,480 (44.3)	1,260 (50.3)

Pick & Carry Capacities Up to 2.5 MPH Boom Centered (7) Over Front

Boom Angle	Main Boom Length in Feet								
	34	38	44	50	56	62	68	74	81
0°	17,900 (28)	11,200 (32.3)	9,470 (38.3)	6,860 (44.3)	5,170 (50.3)	3,750 (56.3)	2,670 (62.3)	1,780 (68.3)	1,050 (74.8)

9380

Note: ( ) Reference radii in feet

Refer to in-cab load chart for notes.

## ON RUBBER 26.5 x 25 TIRES

Stationary Capacity Defined Arc (3) Over Front

Boom Angle	Main Boom Length in Feet							
	34	38	44	50	56	62	68	74
0°	17,650 (28)	13,500 (32.3)	9,680 (38.3)	7,160 (44.3)	5,300 (50.3)	3,720 (56.3)	2,660 (62.3)	1,760 (68.3)

Stationary Capacity 360° Arc

Boom Angle	Main Boom Length in Feet				
	34	38	44	50	56
0°	8,310 (28)	5,975 (32.3)	3,910 (38.3)	2,370 (44.3)	1,235 (50.3)

Pick & Carry Capacities Up to 2.5 MPH Boom Centered (7) Over Front

Boom Angle	Main Boom Length in Feet							
	34	38	44	50	56	62	68	74
0°	17,650 (28)	11,600 (32.3)	8,820 (38.3)	6,780 (44.3)	5,160 (50.3)	3,650 (56.3)	2,610 (62.3)	1,680 (68.3)

9385

## ON RUBBER 29.5 x 25 TIRES

Stationary Capacity Defined Arc (3) Over Front

Boom Angle	Main Boom Length in Feet								
	34	38	44	50	56	62	68	74	81
0°	18,350 (28)	13,600 (32.3)	9,930 (38.3)	7,320 (44.3)	5,455 (50.3)	3,990 (56.3)	2,780 (62.3)	1,950 (68.3)	1,080 (74.8)

Stationary Capacity 360° Arc

Boom Angle	Main Boom Length in Feet				
	34	38	44	50	56
0°	8,740 (28)	6,280 (32.3)	4,060 (38.3)	2,440 (44.3)	1,330 (50.3)

Pick & Carry Capacities Up to 2.5 MPH Boom Centered (7) Over Front

Boom Angle	Main Boom Length in Feet								
	34	38	44	50	56	62	68	74	81
0°	18,350 (28)	13,108 (32.3)	9,930 (38.3)	7,320 (44.3)	5,455 (50.3)	3,990 (56.3)	2,780 (62.3)	1,950 (68.3)	1,080 (74.8)

9390

**ON RUBBER 26.5 X 25-26PR TIRE  
(STATIONARY-DEFINED ARC OVER FRONT)**

Radius in Feet	Main Boom Length in Feet								
	34	38	44	50	56	62	68	74	81
10	55,810 (63.5)	38,700 (67)	20,800 (70.5)						
12	52,230 (60)	33,300 (63.5)	28,450 (67.5)						
15	46,000 (53.5)	27,400 (63.5)	27,400 (63.5)	27,100 (67)	27,100 (70)				
20	31,914 (42)	26,000 (55.5)	20,100 (60.5)	20,100 (64)	20,100 (67)				
25	21,400 (26)	24,400 (37.5)	19,400 (47)	15,400 (33.5)	15,400 (38)	15,400 (42)	15,400 (45)		
30		15,530 (21.5)	15,630 (37)	12,000 (46)	12,000 (52)	12,000 (56.5)	12,000 (60)	12,000 (63)	
35			11,580 (37)	11,500 (45)	9,500 (50.5)	9,500 (54)	9,500 (58.5)	9,500 (62)	
40				8,830 (25.5)	8,300 (37)	8,300 (44)	7,500 (49.5)	7,500 (53.5)	7,500 (58)
45					6,910 (26.5)	6,910 (36.5)	6,700 (43.5)	5,900 (48.5)	5,900 (53.5)
50					5,380 (8)	5,380 (27.5)	5,380 (36.5)	4,600 (43)	4,600 (48.5)
55						3,970 (13)	3,970 (36.5)	3,500 (43.5)	3,500 (48.5)
60							3,020 (16.5)	3,020 (29)	2,600 (37.5)
65								2,250 (19)	1,800 (31)
70									1,500 (22.5)

A6-R29-009277

**ON RUBBER 29.5 X 25-22PR TIRE  
(STATIONARY-DEFINED ARC OVER FRONT)**

Radius in Feet	Main Boom Length in Feet								
	34	38	44	50	56	62	68	74	81
10	58,980 (63.5)								
12	55,200 (60)								
15	50,170 (53.5)								
20	33,400 (42)	27,000 (49)	22,000 (55.5)	22,000 (60.5)					
25	22,740 (26)	22,740 (37.5)	19,000 (47)	17,300 (53.5)	17,300 (58)				
30		15,970 (21.5)	15,970 (37)	13,600 (46)	13,600 (52)	13,600 (56.5)			
36				11,550 (23.5)	10,900 (37)	10,900 (46)	10,900 (50.5)	10,900 (55)	
40					9,120 (25.5)	8,800 (37)	8,800 (44)	8,800 (49.5)	8,800 (53.5)
45						7,060 (26.5)	7,060 (36.5)	7,060 (43.5)	7,060 (48.5)
50						5,520 (8)	5,520 (27.5)	5,520 (36.5)	5,520 (43.5)
55							4,280 (13)	4,280 (36.5)	4,280 (43.5)
60								3,210 (16.5)	3,210 (29)
65									2,360 (19)
70									1,700 (22.5)

A-R29-009076

**ON RUBBER  
(STATIONARY CAPACITIES - 360°)**

Radius in Feet	Main Boom Length in Feet							
	34	38	44	50	56	62	68	74
10	43,040 (63.5)	29,800 (67)	29,800 (70.5)					
12	37,470 (60)	25,000 (63.5)	25,000 (67.5)					
15	27,150 (53.5)	19,700 (58.5)	19,700 (63.5)	19,700 (67)	19,700 (70)			
20	16,470 (42)	16,470 (49)	13,800 (55.5)	13,800 (60.5)	13,800 (64)	13,800 (67)		
25	10,520 (26)	10,520 (37.5)	10,520 (47)	10,000 (53.5)	10,000 (58)	10,000 (62)	10,000 (65)	
30		7,020 (21.5)	7,020 (37)	7,020 (46)	7,020 (52)	7,020 (56.5)	7,020 (60)	7,020 (63)
35			4,880 (23.5)	4,880 (37)	4,880 (46)	4,880 (50.5)	4,880 (55)	4,880 (58.5)
40				3,350 (25.5)	3,350 (37)	3,350 (44)	3,350 (49.5)	3,350 (53.5)
45					2,220 (26.5)	2,220 (36.5)	2,220 (43.5)	2,220 (48.5)
50						1,270 (8)	1,270 (27.5)	1,270 (36.5)

A-R29-009278

**ON RUBBER  
(STATIONARY CAPACITIES - 360°)**

Radius in Feet	Main Boom Length in Feet							
	34	38	44	50	56	62	68	74
10	46,500 (63.5)							
12	37,940 (60)							
15	27,060 (53.5)							
20	16,500 (42)	16,500 (49)	14,500 (55.5)	14,500 (60.5)				
25	11,050 (26)	11,050 (37.5)	11,050 (47)	10,100 (53.5)	10,100 (58)			
30		7,440 (21.5)	7,440 (37)	7,440 (46)	7,440 (52)	7,440 (56.5)		
35			5,160 (23.5)	5,160 (37)	5,160 (46)	5,160 (50.5)	5,160 (55)	
40				3,610 (25.5)	3,610 (37)	3,610 (44)	3,610 (49.5)	3,610 (53.5)
45					2,290 (26.5)	2,290 (36.5)	2,290 (43.5)	2,290 (48.5)
50						1,370 (8)	1,370 (27.5)	1,370 (36.5)

A-R29-009077

**PICK & CARRY CAPACITIES - (UP TO 2.5MPH)  
BOOM CENTERED OVER FRONT**

Radius in Feet	Main Boom Length in Feet								
	34	38	44	50	56	62	68	74	81
10	48,220 (63.5)	38,700 (67)	29,800 (70.5)						
12	42,060 (60)	33,300 (63.5)	28,450 (67.5)						
15	35,010 (53.5)	27,100 (63.5)	27,100 (63.5)	27,100 (67)	27,100 (70)				
20	30,320 (42)	20,100 (49)	20,100 (56.5)	20,100 (60.5)	20,100 (64)	20,100 (67)			
26	21,400 (26)	18,800 (37.5)	15,400 (47)	15,400 (53.5)	15,400 (58)	15,400 (62)	15,400 (66)	15,400 (67)	
30		15,530 (21.5)	12,000 (37)	12,000 (46)	12,000 (52)	12,000 (56.5)	12,000 (60)	12,000 (63)	12,000 (66)
35			10,250 (37)	9,500 (45)	9,500 (50.5)	9,500 (55)	9,500 (58.5)	9,500 (62)	
40				8,150 (25.5)	7,500 (37)	7,500 (44)	7,500 (49.5)	7,500 (53.5)	7,500 (58)
45					5,830 (26.5)	5,900 (36.5)	5,900 (43.5)	5,900 (48.5)	5,900 (53.5)
50						3,230 (8)	4,400 (27.5)	4,400 (36.5)	4,400 (43.5)
55							3,900 (13)	3,500 (28.5)	3,500 (36.5)
60								2,970 (16.5)	2,600 (29)
65									2,200 (19)
70									1,470 (22.5)

A-R29-009279

**PICK & CARRY CAPACITIES - (UP TO 2.5MPH)  
BOOM CENTERED OVER FRONT**

Radius in Feet	Main Boom Length in Feet								
	34	38	44	50	56	62	68	74	81
10	52,100 (63.5)								
12	45,410 (60)								
15	37,780 (53.5)								
20	30,540 (42)	27,000 (49)	22,200 (55.5)	22,200 (60.5)					
25	22,740 (26)	19,000 (37.5)	19,000 (47)	17,300 (53.5)	17,300 (58)				
30		15,970 (21.5)	13,600 (37)	13,600 (46)	13,600 (52)	13,600 (56.5)			
36				11,550 (23.5)	10,900 (37)	10,900 (46)	10,900 (50.5)	10,900 (55)	
40					9,120 (25.5)	8,800 (37)	8,800 (44)	8,800 (49.5)	8,800 (53.5)
45						7,060 (26.5)	7,060 (36.5)	7,060 (43.5)	7,060 (48.5)
50						5,520 (8)	5,520 (27.5)	5,520 (36.5)	5,520 (43.5)
55							4,280 (13)	4,280 (36.5)	4,280 (43.5)
60								3,210 (16.5)	3,210 (29)
65									2,360 (19)
70									1,700 (22.5)

A-R29-009078

**32 FT. SWINGAWAY - 360°**

Main Boom Angle (Deg.)	0° OFFSET	15° OFFSET	30° OFFSET
<b>POWER PINNED FLY RETRACTED</b>			
	<b>#0051</b>	<b>#0052</b>	<b>#0053</b>
75	18,200 (25.5)	10,300 (31.6)	6,900 (36.6)
70	14,900 (34.6)	9,000 (40.4)	6,400 (45.0)
65	12,200 (43.4)	8,000 (48.9)	6,100 (53)
60	10,200 (51.8)	7,100 (57.0)	5,600 (60.6)
55	8,800 (59.8)	6,600 (64.6)	5,400 (67.6)
50	7,900 (67.4)	6,100 (71.7)	5,100 (74.1)
45	7,020 (74.4)	5,700 (78.2)	5,000 (80)
<b>POWER PINNED FLY EXTENDED</b>			
	<b>#0055</b>	<b>#0056</b>	<b>#0057</b>
75	11,000 (35.8)	8,500 (41.6)	6,400 (46.0)
70	9,200 (46.6)	7,500 (52.2)	5,900 (56.4)
65	7,800 (57.1)	6,500 (62.4)	5,500 (66.2)
60	6,600 (67.2)	5,700 (72.1)	5,100 (75.6)
55	5,700 (76.7)	5,000 (81.3)	4,700 (84.3)
50	5,000 (85.7)	4,400 (89.8)	4,200 (92.4)
45	4,220 (94.0)	3,700 (97.6)	3,410 (99.8)

A6-829-008562 & DIMS63

**MAIN BOOM  
ON OUTRIGGERS FULLY EXTENDED - 360°**

Radius in Feet	#0001										#0002
	Main Boom Length in Feet (Power Pinned Fly Retracted)										Power Pin. Fly Ext. @ 81 ft.
	34	38	44	50	56	62	68	74	81		
10	90,000 (63.5)	73,750 (67)	69,950 (70.5)	68,200 (70.5)	63,350 (75)						104
12	75,000 (60)	73,750 (63.5)	68,700 (67.5)	61,600 (70.5)	57,150 (73)	53,750 (75)					
15	62,000 (63.5)	67,000 (58.5)	58,050 (63.5)	54,000 (67)	51,000 (70)	46,850 (72)	43,850 (74)	40,850 (75.5)			
20	47,300 (42)	47,300 (49)	47,300 (55.5)	43,950 (60.5)	40,550 (64)	38,000 (67)	35,700 (69.5)	33,100 (71.5)	30,000 (74)		
25	36,000 (26)	36,000 (37.5)	36,000 (47)	36,000 (53.5)	34,050 (58)	31,800 (62)	29,900 (65)	27,600 (67)	25,200 (70)	21,800 (75.5)	
30		29,000 (21.5)	29,000 (37)	29,000 (46)	29,000 (52)	27,100 (56.5)	25,600 (60)	23,500 (63)	21,500 (66)	18,800 (72.5)	
35			23,800 (23.5)	23,800 (37)	23,800 (45)	23,500 (50.5)	22,250 (55)	20,350 (58.5)	18,650 (62)	16,400 (69.6)	
40				19,200 (25.5)	19,200 (37)	19,200 (44)	19,200 (49.5)	17,800 (53.5)	16,200 (58)	14,500 (66.5)	
45					15,900 (26.5)	15,900 (36.5)	15,900 (43.5)	15,750 (48.5)	14,250 (53.5)	12,750 (63.5)	
50						13,150 (8)	13,150 (27.5)	13,150 (36.5)	13,150 (43)	12,600 (48.5)	11,300 (60.5)
55							11,200 (13)	11,200 (28.5)	11,200 (36.5)	11,200 (43.5)	10,000 (57)
60								9,560 (16.5)	9,560 (29)	9,560 (37.5)	9,050 (53.5)
65									8,000 (19)	8,000 (31)	8,150 (50)
70										6,870 (22.5)	7,360 (46)
75											6,660 (42)
80											6,040 (37)
85											5,380 (32)
90											4,450 (25.5)
95											3,580 (17)
Minimum boom angle (deg.) for indicated length (no load)										0	0
Maximum boom length (ft.) at 0 deg. boom angle (no load)										81	104

A6-829-008671

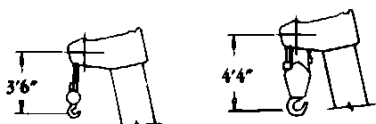
**WEIGHT REDUCTION FOR  
LOAD HANDLING DEVICES**

32 ft. Extension with 34 ft. - 104 ft. Boom	
*Stowed -	884 lbs.
*Erected -	5,730 lbs.

32 ft. - 56 ft. Tele. Ext. with 34 ft.-104 ft. Boom	
*Stowed -	1,038 lbs.
*Erected (ret) -	7,268 lbs.
*Erected (ext) -	9,367 lbs.

AUXILIARY BOOM HEAD	220 lbs.
HOOKBLOCKS & HEADACHE BALLS:	
15 Ton, 1 Sheave	400 lbs.
45 Ton, 3 Sheave	1,100 lbs.
7.5 Ton Headache Ball	338 lbs.
10 Ton Headache Ball	560 lbs.

DIMENSIONS ARE FOR LARGEST GROVE FURNISHED HOOK BLOCK AND HEADACHE BALL, WITH ANTI-TWO BLOCK ACTIVATED.



**32 FT. - 56 FT. TELE. SWINGAWAY - 360°**

Main Boom Angle (Deg.)	32 ft. LENGTH			44 ft. LENGTH			56 ft. LENGTH		
	0° OFFSET	15° OFFSET	30° OFFSET	0° OFFSET	15° OFFSET	30° OFFSET	0° OFFSET	15° OFFSET	30° OFFSET
	<b>POWER PINNED FLY RETRACTED</b>								
	<b>#0021</b>	<b>#0022</b>	<b>#0023</b>	<b>#0031</b>	<b>#0032</b>	<b>#0033</b>	<b>#0041</b>	<b>#0042</b>	<b>#0043</b>
75	17,500 (25.5)	9,600 (31.6)	6,500 (36.6)	11,700 (30.3)	6,400 (40.0)	4,500 (47.3)	8,900 (35.1)	4,800 (48.5)	3,200 (57.1)
70	14,200 (34.6)	8,300 (40.4)	5,800 (45.0)	9,400 (40.5)	5,200 (49.8)	3,900 (56.4)	7,100 (56.4)	4,200 (58.9)	2,800 (66.8)
65	11,500 (43.4)	7,300 (48.9)	5,400 (53.0)	7,700 (50.3)	4,800 (59.1)	3,700 (65.1)	5,700 (56.8)	3,600 (68.8)	2,600 (76.0)
60	9,500 (51.8)	6,500 (57.0)	5,000 (60.6)	6,400 (59.7)	4,500 (68.0)	3,600 (73.3)	4,800 (67.0)	3,200 (78.2)	2,500 (84.6)
55	8,100 (59.8)	5,900 (64.6)	4,700 (67.6)	5,200 (68.7)	4,100 (76.4)	3,400 (80.9)	4,000 (76.7)	2,800 (87.0)	2,400 (92.5)
50	7,200 (67.4)	5,400 (71.7)	4,400 (74.1)	4,800 (77.1)	3,800 (84.1)	3,300 (87.8)	3,400 (85.8)	2,600 (95.1)	2,300 (99.6)
45	6,500 (74.4)	5,000 (78.2)	4,300 (80.0)	4,500 (84.9)	3,600 (91.2)	3,200 (94.0)	3,200 (94.2)	2,500 (102.4)	2,200 (106.0)
<b>POWER PINNED FLY EXTENDED</b>									
	<b>#0025</b>	<b>#0026</b>	<b>#0027</b>	<b>#0035</b>	<b>#0036</b>	<b>#0037</b>	<b>#0045</b>	<b>#0046</b>	<b>#0047</b>
75	10,300 (35.8)	7,800 (41.6)	6,000 (46.0)	8,700 (41.5)	5,800 (50.9)	4,200 (57.7)	7,000 (47.4)	4,400 (58.6)	3,000 (67.3)
70	8,500 (46.6)	6,800 (52.2)	5,300 (56.4)	7,100 (52.3)	5,200 (62.5)	3,900 (68.6)	5,900 (60.0)	3,800 (70.9)	2,700 (78.7)
65	7,100 (57.1)	5,800 (62.4)	4,800 (66.2)	5,900 (64.8)	4,600 (73.6)	3,700 (79.0)	5,000 (72.2)	3,300 (82.6)	2,500 (89.5)
60	5,900 (67.2)	5,100 (72.1)	4,500 (75.6)	4,900 (75.8)	4,100 (84.2)	3,400 (88.7)	4,200 (83.9)	3,000 (93.8)	2,400 (99.6)
55	5,000 (76.7)	4,300 (81.3)	4,000 (84.3)	4,000 (86.3)	3,600 (94.1)	3,000 (97.8)	3,400 (95.0)	2,600 (104.3)	2,100 (109.0)
50	4,300 (85.7)	3,700 (89.8)	3,500 (92.4)	3,400 (96.1)	3,100 (103.3)	2,700 (106.1)	2,700 (105.4)	2,400 (114.0)	2,000 (117.5)
45	3,500 (94.0)	3,200 (97.6)	2,930 (99.8)	2,900 (105.3)	2,460 (111.8)	2,290 (113.6)	2,400 (115.0)	2,160 (122.9)	1,900 (125.1)

A6-829-00832

# NOTES FOR LIFTING CAPACITIES

**WARNING: THIS CHART IS ONLY A GUIDE.** The Notes below are for illustration only and should not be relied upon to operate the crane. The individual crane's load chart, operating instructions and other instruction plates must be read and understood prior to operating the crane.

- All rated loads have been tested to and meet minimum requirements of SAE J1063 OCT80 - Cantilevered Boom Crane Structures - Method of Test, and do not exceed 85% of the tipping load on outriggers (75% of the tipping load on rubber) as determined by SAE J765 OCT 80 Crane Stability Test Code.
- Capacities given do not include the weight of hookblocks, slings, auxiliary lifting equipment and load handling devices. Their weights MUST be added to the load to be lifted. When more than minimum required reeving is used, the additional rope weight shall be considered part of the load.
- Defined Arc  $\pm 6^\circ$  on either side of longitudinal centerline of machine.
- Capacities appearing above the bold line are based on structural strength and tipping should not be relied upon as a capacity limitation.
- All capacities are for crane on firm, level surface. It may be necessary to have structural supports under the outrigger floats or tires to spread the load to a larger bearing surface.
- When either boom length or radius or both are between values listed, the smallest load shown at either the next larger radius or boom length shall be used.
- Tires shall be inflated to the recommended pressure before lifting on rubber
- For outrigger operation, ALL outriggers shall be fully extended with tires raised free of ground before raising the boom or lifting loads.
- Unless otherwise stated, capacities are with powered boom sections equally extended.
- With tele boom extension in working position and main boom length greater than 81 ft., boom angle must not be less than  $30^\circ$ , since loss of stability will occur causing a tipping condition.

Constant improvement and engineering progress make it necessary that we reserve the right to make specification, equipment, and price changes without notice. Illustrations shown may include optional equipment and accessories and may not include all standard equipment.



**Grove Worldwide - World Headquarters**  
1565 Buchanan Trail East  
Shady Grove, Pennsylvania 17256  
Phone: (717) 597-8121 Telex: 1842308 Fax: (717) 597-4062

**Grove North America**  
P.O. Box 21, Shady Grove, Pennsylvania 17256  
Western Hemisphere, Asia/Pacific  
Phone: (717) 597-8121 Telex: 1842308 Fax: (717) 597-4062

**Grove Europe\***  
Sunderland, England SR4 6TT  
Europe, Africa, Middle East, Near East  
Phone: (091)565-6281 Telex: 53484 CRANESG FAX: (091)564-0442  
\*Grove Europe Limited, Registered in England, Number 1845128. Registered office, Crown Works, Pallion, Sunderland, Tyne & Wear, England SR4 6TT.

FORM NO.: LC-RT745 34'-104' P.P. Boom P/N: 3-359 293-5M PRINTED IN U.S.A.

## ON RUBBER 21.00X25 - 24 PLY TIRES (STATIONARY - DEFINED ARC OVER FRONT)

Radius in Feet	#8005									
	Main Boom Length in Feet									
	34	38	44	50	56	62	68	74	81	
10	84,000 (63.5)	41,900 (67)								
12	58,350 (60)	36,000 (63.5)								
15	50,500 (53.5)	29,450 (59.5)	29,450 (63.6)							
20	37,400 (42)	24,500 (49)	21,950 (55.5)	21,950 (60.5)						
25	27,400 (28)	21,600 (37.5)	17,950 (47)	16,950 (53.5)	16,950 (58)	16,950 (62)				
30		15,850 (21.5)	15,850 (37)	13,400 (46)	13,400 (52)	13,400 (58.5)	13,400 (60)	13,400 (63)	13,400 (66)	
35			11,850 (23.5)	10,700 (46)	10,700 (51.5)	10,700 (56.5)	10,700 (60.5)	10,700 (65)	10,700 (69.5)	10,700 (74)
40				9,080 (25.5)	8,600 (37)	8,600 (44)	8,600 (49.5)	8,600 (53.5)	8,600 (58)	8,600 (62)
45					7,010 (26.5)	7,010 (36.5)	6,900 (43.5)	6,800 (48.5)	6,800 (53.5)	6,800 (58)
50						5,420 (8)	5,420 (27.5)	5,420 (36.5)	5,420 (43)	5,420 (48.5)
55							4,160 (13)	4,160 (28.5)	4,160 (38.5)	4,160 (43.5)
60								2,130 (16.5)	2,130 (29)	2,130 (37.5)
65									2,280 (19)	2,280 (31)
70										1,970 (22.5)

AG-829-009321

## ON RUBBER (STATIONARY CAPACITIES - 360°)

Radius in Feet	#8005							
	Main Boom Length in Feet							
	34	38	44	50	56	62	68	74
10	46,700 (63.5)	23,800 (67)						
12	28,950 (60)	25,000 (63.5)						
15	26,450 (53.5)	19,600 (58.5)	19,600 (63.5)					
20	16,800 (42)	16,800 (48)	13,850 (55.5)	13,850 (60.5)				
25	11,250 (28)	11,250 (37.5)	11,250 (47)	9,980 (53.5)	9,980 (58)	9,980 (62)		
30		7,640 (21.5)	7,940 (37)	7,640 (46)	7,280 (52)	7,280 (58.5)	7,280 (60)	7,280 (63)
35			5,280 (23.5)	5,280 (37)	5,280 (46)	5,270 (53.5)	5,270 (58)	5,270 (62)
40				3,550 (25.5)	3,550 (37)	3,590 (44)	3,590 (49.5)	3,590 (53.5)
45					2,310 (26.5)	2,310 (36.5)	2,310 (43.5)	2,310 (48.5)
50						1,300 (8)	1,300 (27.5)	1,300 (38.5)

AG-829-009322

## PICK & CARRY CAPACITIES (UP TO 2.5 MPH) BOOM CENTERED OVER FRONT

Radius in Feet	#8008									
	Main Boom Length in Feet									
	34	38	44	50	56	62	68	74	81	
10	58,500 (63.5)	39,900 (67)								
12	49,100 (63.5)	34,500 (63.5)								
15	40,650 (63.5)	28,400 (58.5)	28,400 (63.5)	28,400 (67)						
20	30,900 (42)	21,300 (49)	21,300 (55.5)	21,300 (60.5)	21,300 (64)	21,300 (67)	21,300 (69.5)			
25	21,600 (26)	16,800 (37.5)	16,800 (47)	16,800 (53.5)	16,800 (58)	16,800 (62)	16,800 (66)	16,800 (69.5)		
30		15,850 (21.5)	13,100 (37)	13,100 (46)	13,100 (53)	13,100 (58.5)	13,100 (60)			
35			11,850 (23.5)	10,500 (37)	10,500 (46)	10,500 (50.5)	10,500 (55)	10,600 (58.5)	10,600 (62)	
40				9,280 (25.5)	8,500 (37)	8,500 (44)	8,500 (49.5)	8,500 (53.5)	8,500 (58)	
45					7,010 (26.5)	6,800 (36.5)	6,800 (43.5)	6,800 (48.5)	6,800 (53.5)	6,800 (58)
50						5,420 (8)	5,400 (27.5)	5,400 (36.5)	5,400 (43)	5,400 (48.5)
55							4,160 (13)	4,160 (28.5)	4,160 (38.5)	4,160 (43.5)
60								3,130 (16.5)	3,130 (29)	3,130 (37.5)
65									2,280 (19)	2,280 (31)
70										1,970 (22.5)

NOTE: Boom angles are in degrees.

AG-829-009323

## NO LOAD STABILITY ON RUBBER

		No Load Stability Data	Main Boom Fly Ret.
Front (No load)	Min. boom angle (deg.) for indicated length		0
	Max. boom length (ft.) at 0 deg. boom angle		81
360 Deg. (No load)	Min. boom angle (deg.) for indicated length		47
	Max. boom length (ft.) at 0 deg. boom angle		62