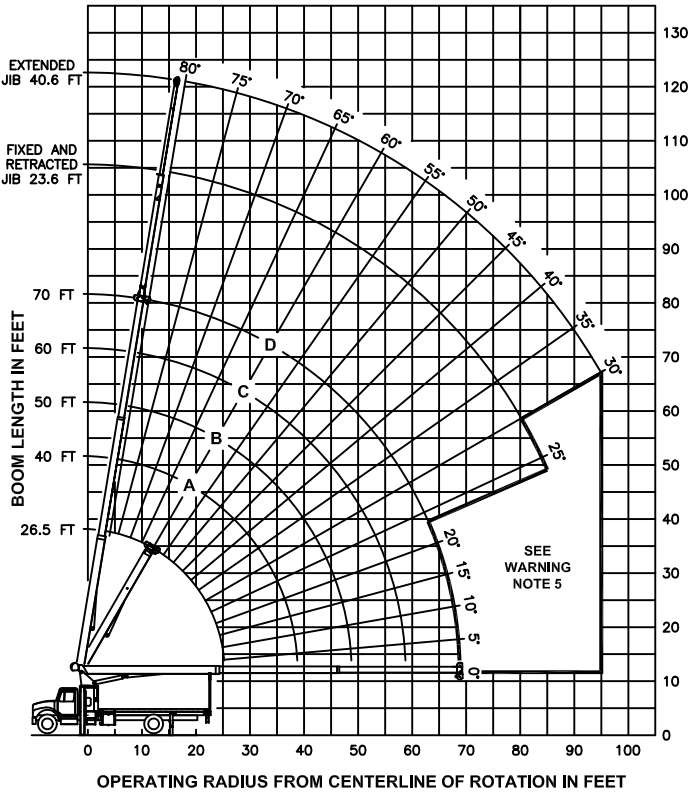


RANGE DIAGRAM



HEIGHT ABOVE GROUND IN FEET

LOAD RATINGS IN LBS WITH OUTRIGGERS AND STABILIZERS EXTENDED

BOOM LENGTH IN FEET	LMI CODE #1				
	LOADED BOOM ANGLE	BOOM LENGTH AND MARKER	BASE		
	26.5 FT	40 FT	50 FT	60 FT	
	A	B	C	D	
5	79	34000			
8	73	23930	79	22330	
10	68	20230	76	18670	80
12	63	17600	73	16100	77
15	55	14420	69	13400	74
20	40	10350	61	10540	68
25	12	7830	52	8070	61
30			41	6400	54
35			28	5160	47
40				37	4200
45				25	3360
50					35
55					24
60					
65					
70					
75					
80					
85					
90					
95					

JIB LOAD RATINGS IN LBS WITH OUTRIGGERS AND STABILIZERS EXTENDED

BOOM LENGTH IN FEET	FIXED JIB			TELESCOPIC JIB		
	LMI CODE #2	LMI CODE #3	LMI CODE #4	LMI CODE #2	LMI CODE #3	LMI CODE #4
	JIB LENGTH FOR ALL BOOM LENGTHS	JIB LENGTH FOR ALL BOOM LENGTHS	JIB LENGTH FOR ALL BOOM LENGTHS	JIB LENGTH FOR ALL BOOM LENGTHS	JIB LENGTH FOR ALL BOOM LENGTHS	JIB LENGTH FOR ALL BOOM LENGTHS
5	79	34000				
8	73	23930	79	22330		
10	68	20230	76	18670	80	18000
12	63	17600	73	16100	77	15420
15	55	14420	69	13400	74	12780
20	40	10350	61	10540	68	9970
25	12	7830	52	8070	61	8130
30			41	6400	54	6470
35			28	5160	47	5240
40				37	4200	50
45				25	3360	43
50					35	2790
55					24	2290
60						33
65						23
70						
75						
80						
85						
90						
95						

350 LBS	240 LBS	190 LBS	160 LBS	140 LBS	140 LBS	DEDUCTIONS FOR STOWED FIXED JIB
530 LBS	350 LBS	280 LBS	240 LBS	200 LBS	200 LBS	DEDUCTIONS FOR STOWED TELESCOPIC JIB

WARNING

- THE OPERATOR MUST READ AND UNDERSTAND THE OWNER'S MANUAL BEFORE OPERATING THIS CRANE.
- POSITIONING OR OPERATION OF CRANE BEYOND AREAS SHOWN ON THIS CHART IS NOT INTENDED OR APPROVED EXCEPT WHERE SPECIFIED IN OWNER'S MANUAL.
- LOADED BOOM ANGLES AT SPECIFIED BOOM LENGTHS GIVE ONLY AN APPROXIMATION OF THE OPERATING RADIUS. THE BOOM ANGLE BEFORE LOADING SHOULD BE GREATER TO ACCOUNT FOR DEFLECTIONS. DO NOT EXCEED THE OPERATING RADIUS FOR RATED LOADS.
- THE OPERATING RADIUS SHOWN IN THE JIB RATING CHART IS FOR FULLY EXTENDED BOOM ONLY. WHEN BOOM IS NOT FULLY EXTENDED, USE ONLY LOADED BOOM ANGLE TO DETERMINE LOAD RATING OF JIB.
- BOOM MUST BE FULLY RETRACTED WHEN JIB IS ERECTED, BEFORE LOWERING BOOM THROUGH THIS AREA.
- FOR BOOM ANGLES NOT SHOWN ON JIB LOAD RATING CHART, USE RATING OF NEXT LOWER BOOM ANGLE.
- FOR BOOM LENGTHS NOT SHOWN, USE RATING OF NEXT LONGER BOOM LENGTH. FOR RADII NOT SHOWN, USE RATING OF NEXT LONGER RADIUS.
- CRANE LOAD RATINGS ON OUTRIGGERS ARE BASED ON FREELY SUSPENDED LOADS WITH THE MACHINE LEVELED AND STANDING ON A FIRM UNIFORM SUPPORTING SURFACE. NO ATTEMPT SHALL BE MADE TO MOVE A LOAD HORIZONTALLY ON THE GROUND IN ANY DIRECTION.
- PRACTICAL WORKING LOADS DEPEND ON SUPPORTING SURFACE, WIND, AND OTHER FACTORS AFFECTING STABILITY SUCH AS HAZARDOUS SURROUNDINGS, EXPERIENCE OF PERSONNEL, AND PROPER HANDLING, ALL OF WHICH MUST BE TAKEN INTO ACCOUNT BY THE OPERATOR.
- THE MAXIMUM LOAD WHICH MAY BE TELESCOPED IS LIMITED BY HYDRAULIC PRESSURE, BOOM ANGLE, AND BOOM LUBRICATION. IT IS SAFE TO ATTEMPT TO TELESCOPE ANY LOAD WITHIN THE LIMITS OF THE LOAD RATING CHART. BOOM MUST BE FULLY RETRACTED AGAINST BOOM STOPS AT ALL TIMES WHEN LIFTING MINIMUM BOOM LENGTH CAPACITY LOADS.

INFORMATION

- DEDUCTIONS MUST BE MADE FROM RATED LOADS FOR STOWED JIB, OPTIONAL ATTACHMENTS, HOOKS, AND LOADBLOCKS (SEE DEDUCTION CHART). WEIGHTS OF SLINGS AND ALL OTHER LOAD HANDLING DEVICES SHALL BE CONSIDERED A PART OF THE LOAD.
 - CRANE LOAD RATINGS WITH OUTRIGGERS ARE BASED ON OUTRIGGERS AND STABILIZERS EXTENDED AND SET WITH MACHINE LEVELED.
 - LOAD RATINGS ABOVE THE HEAVY LINE ARE STRUCTURALLY LIMITED CAPACITIES. LOAD RATINGS BELOW THE HEAVY LINE ARE STABILITY LIMITED CAPACITIES AND DO NOT EXCEED 85% OF TIPPING.
- DEFINITIONS**
- OPERATING RADIUS IS THE HORIZONTAL DISTANCE FROM THE AXIS OF ROTATION TO THE CENTER OF THE VERTICAL HOIST LINE OR TACKLE WITH LOAD APPLIED.
 - LOADED BOOM ANGLE AS SHOWN IN THE COLUMN HEADED BY \angle IS THE INCLUDED ANGLE BETWEEN THE HORIZONTAL AND LONGITUDINAL AXES OF THE BOOM BASE AFTER LIFTING RATED LOAD AT RATED RADIUS.

LMI OPERATING CODES

SETTING	CRANE CONFIGURATION	SETTING	CRANE WITH PERSONNEL LIFTING PLATFORM
#1	MAIN BOOM	#5	PERSONNEL LIFTING PLATFORM ON MAIN BOOM
#2	FIXED JIB	#6	PERSONNEL LIFTING PLATFORM ON FIXED JIB
#3	TELE JIB - RETRACTED	#7	PERSONNEL LIFTING PLATFORM ON TELE JIB - RETRACTED
#4	TELE JIB - EXTENDED		WARNING: LIFTING PERSONNEL FROM EXTENDED JIB IS NOT APPROVED

ALLOWABLE LINE PULL

1 PART LINE	2 PART LINE	3 PART LINE	4 PART LINE	WARNING
8500 LBS	17000 LBS	25500 LBS	34000 LBS	<p>ANTI-TWO-BLOCK SYSTEM MUST BE IN GOOD OPERATING CONDITION BEFORE OPERATING CRANE. REFER TO OWNER'S MANUAL.</p> <p>KEEP AT LEAST 3 WRAPS OF LOAD LINE ON DRUM AT ALL TIMES.</p> <p>9/16" - 6X25 IWRC (3.5:1 S.F.) 29750 LBS. BREAKING STRENGTH</p> <p>9/16" ROT RESISTANT (5.0:1 S.F.) 37000 LBS. BREAKING STRENGTH</p>
7400 LBS	14800 LBS	22200 LBS	29600 LBS	

DEDUCTIONS FROM RATED LOADS FOR LOAD HANDLING DEVICES SUPPLIED BY MANITEX

OVERHAUL BALL	SEE OVERHAUL BALL MFG. NAMEPLATE LOAD BLOCKS	SEE OVERHAUL BALL MFG. NAMEPLATE LOAD BLOCKS
HOSE REEL	SEE BLOCK MFG. NAMEPLATE	160 LBS
SWING AROUND JIB	SEE LOAD CHART	

WARNING

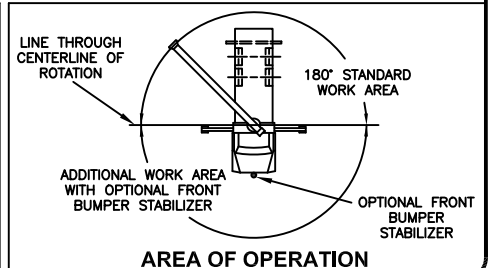
LIFTING OFF THE MAIN BOOM POINT WHILE THE JIB IS ERECTED IS NOT INTENDED OR APPROVED.



MODELS
1770C & 1770T

CRANE MEETS ANSI B30.5 REQUIREMENTS

7300086-007 NR



AREA OF OPERATION